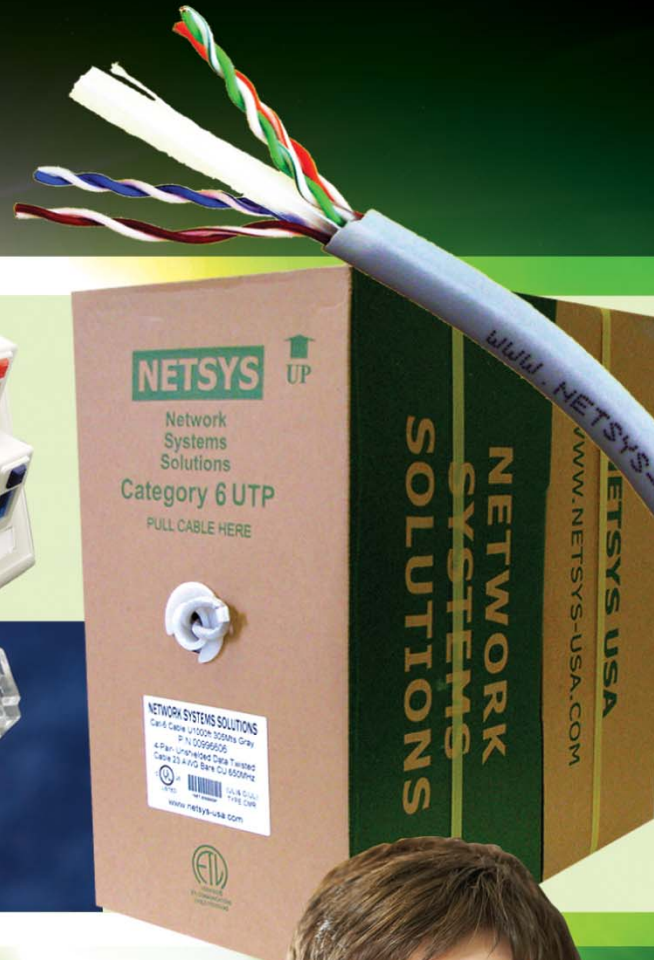




# NETSYS

USA Inc.

Network Systems Solutions





**NETSYS**  
USA Inc.  
Network Systems Solutions

Network Systems Solutions a manufacturer for high quality products at reasonable prices. All of NETSYS USA INC. products come with a limited lifetime warranty, and are UL Listed.



## Patch Panel Category 5e Solutions



Netsys Category 5e Patch Panel exceeds TIA/EIA 568-B.2-1 standard. Available in 12, 16, 24 and 48 port versions. Feature enhanced front labeling for easy circuit identification. Include Rear Support Cable Management.

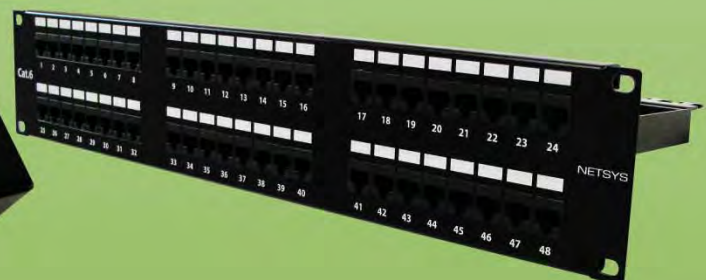
| PART NUMBER   | DESCRIPTION                                     |      |
|---------------|---|------|
| NET-PPC5E12PT | Cat 5e 12 Ports Patch Panel, RJ45 W/Support Bar | 1 RU |
| NET-PPC5E16PT | Cat 5e 16 Ports Patch Panel, RJ45 W/Support Bar | 1 RU |
| NET-PPC5E24PT | Cat 5e 24 Ports Patch Panel, RJ45 W/Support Bar | 1 RU |
| NET-PPC5E48PT | Cat 5e 48 Ports Patch Panel, RJ45 W/Support Bar | 2 RU |



NETSYS USA, Cat 6 panels exceed TIA/EIA-568-B.2-1 component. Cat 6 panels support both T568A and T568B wiring configurations. NETSYS USA, Panels are constructed for maximum strength and durability. Cat 6 patch panels feature 110 terminations for easy and trouble free installations and mounting. These patch panels have been fully tested at plant, and in the field. Panels include support bar cable management, which easily mounts to the back of the panel, is available for improved cable routing and strain relief.

## Patch Panels Category 6 GigaSpeed

| PART NUMBER  | DESCRIPTION  |
|--------------|--|
| NET-PPC616PT | Cat 6 16 Ports Patch Panel W/Support Bar/Dust cover  |
| NET-PPC624PT | Cat 6 24 Ports Patch Panel W/Support Bar/Dust cover  |
| NET-PPC648PT | Cat 6 48Ports Patch Panel W/ Support Bar/ Dust cover |



## Category 5e, 6 Snap-in Keystone Jack RJ45



NETSYS USA, Cat 5e Keystone Jacks product has been enhanced to support all today's network operating systems including Gigabit Ethernet. Netsys Category 5e Keystone Jack RJ45 exceeds TIA/EIA 568-B.2-1 standard and supports both T568A and T568B wiring configurations.

NETSYS USA, Category 6 Channel Level Keystone Jacks have been designed to meet the need for high-bandwidth applications, are engineered to exceed all TIA/EIA-568-B.2-1 Category 6 permanent link and channel level requirements. Category 6 jacks are fully tested. Category 6 Keystone jacks support T568A and T568B wiring, using an easy to read color-code wiring.

| PART NUMBER   | DESCRIPTION  |
|---------------|--|
| NET-KJC5E-BL  | Keystone Jack T568A/B CATEGORY 5e RJ45, Color Blue   |
| NET-KJC5E-GN  | Keystone Jack T568A/B CATEGORY 5e RJ45, Color Green  |
| NET-KJC5E-WH  | Keystone Jack T568A/B CATEGORY 5e RJ45, Color White  |
| NET-KJC5E-RD  | Keystone Jack T568A/B CATEGORY 5e RJ45, Color Red    |
| NET-KJC5E-BLK | Keystone Jack T568A/B CATEGORY 5e RJ45, Color Black  |
| NET-KJC5E-YW  | Keystone Jack T568A/B CATEGORY 5e RJ45, Color Yellow |
| NET-KJC5E-GY  | Keystone Jack T568A/B CATEGORY 5e RJ45, Color Gray   |

| PART NUMBER | DESCRIPTION                                      |
|-------------|--|
| NET-KJC6RD  | NETSYS USA CAT 6 KEYSTONE JACK RJ45 COLOR RED    |
| NET-KJC6WH  | NETSYS USA CAT 6 KEYSTONE JACK RJ45 COLOR WHITE  |
| NET-KJC6BL  | NETSYS USA CAT 6 KEYSTONE JACK RJ45 COLOR BLUE   |
| NET-KJC6GY  | NETSYS USA CAT 6 KEYSTONE JACK RJ45 COLOR GRAY   |
| NET-KJC6GN  | NETSYS USA CAT 6 KEYSTONE JACK RJ45 COLOR GREEN  |
| NET-KJC6YW  | NETSYS USA CAT 6 KEYSTONE JACK RJ45 COLOR YELLOW |
| NET-KJC6BLK | NETSYS USA CAT 6 KEYSTONE JACK RJ45 COLOR BLACK  |

## UTP Patch Cords Cat 5e & 6

NETSYS USA offers the highest quality Cat 5e and Cat 6 Patch Cords in a wide variety of lengths and colors. All Cat 5e and Cat 6 Patch Cords are tested to comply with TIA/EIA 568B standards and come with a limited lifetime warranty. Available in Lengths: 3 Ft, 7 Ft, 10 Ft, 14Ft, 15 Ft, 25Ft, 50Ft.



CAT 6

CAT 5e



## Faceplate 45 Degree and Single Gang Standard Flush Mount Faceplates

Netsys USA provides you a High Quality 45 Degree Keystone Jack Faceplates with Connector. Your installation will look professionally and will satisfy the TIA/EIA 569A standard. Single Gang 45 Degree Angled wallplate with Keystone Jack.

### Includes:

- Keystone Jacks w/ Dustcovers
- One 45° angled faceplate Single Gang
- Available with 1 and 2 Ports
- Available in White Color
- Two Mounting Screws
- TIA/EIA 606 Station Labeling
- Available for Cat 5e and Cat 6 Solutions.



Netsys USA faceplates are perfect for mounting your keystone connections onto the wall for both space-management and convenience. A wide range of styles are offered to accommodate the many possible voice data combination. Each individually packaged mount wall plate comes with its own screws for mounting. Netsys USA standard faceplate are offered in 1, 2, 3, 4, and 6 port configuration.



## UTP Category 6, 5e and 3 Cables

NETSYS USA offers High Quality Lan Cable Solution Cat 6 UTP tested up to 650MHz 4 pair unshielded Data Twisted Cable 23 AWG. Cable and accessories provide sufficient headroom for most robust network & application. This includes gigabit Ethernet and applications like broadband video, 3D imaging and other multimedia applications. Cat 6 products have been optimized to support today's fastest network technologies.

Cat 5e 350MHz UTP PVC Solid 4 Pairs 24 AWG 100 Ohms. Provides significant headroom above current Cat 5e specifications for applications in voice, data, video and security capabilities. Our Cat 5e 350MHz Cable is perfect for your network installation. Whether you are wiring your home, office or entire campus, we have the solution that's right for you.

Cat 3 UTP 16 MHz Unshielded Data Twisted 24 AWG. Cable for residential analog and digital voice communications. Category 3 cables are available from 2 pair up to 100-pair.



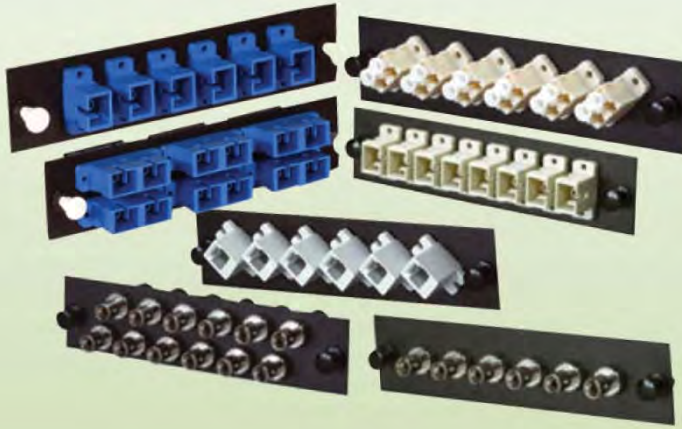
## Fiber Optic Patch Cords

NETSYS USA Fiber Optic Patch Cords provide the highest level of connectivity for all your fiber interconnect applications. All fiber patch cord are Manufactured with OFNR riser grade cable and 100% factory tested to ensure performance to TIA/EIA-568-B-3 standards.



## Fiber Optic Couplers

In order to customize wall mount or rack mount fiber optic enclosures, Netsys USA offers several panels with various adapters including ST, SC, MTRJ and LC. All modular adapter panels are assembled with industry standard adapters. The multimode/singlemode adapters utilize high performance zirconia ceramic and phosphorous-bronze split sleeve inserts for minimal insertion loss contribution. A blank metal adapter panel is also available. The adapter panels are easily snapped into the enclosures with snap lock mounting fixtures.



## Fiber Box Rack Mount Solution

P/N: NET-FBX4MRACK



P/N: NET-FBX6MRACK



P/N: NET-FBX12MRACK



Accessories Included Inside Each Box



The two-rack space four & six module fiber optic enclosures provide additional capacity for higher fiber count requirements, enabling up to 48 fiber capacity in the four module enclosure, and up to 72 fibers in the six-module version. Both enclosures feature recessed front panel, facilitating coupling access, and two access doors in front and rear. The plexi-glass front panel enables visual inspection when closed. All NETSYS USA connector interface modules are compatible with the two-rack space enclosure.

NETSYS USA four-rack space, 12-module fiber optic box contains all of the features of the two-rack space model, but with additional capacity to manage fiber counts up to 144. Cable entry/exit feature utilizes a flexible grommet seal, which is cut at time of installation to accommodate the desired cable diameters for entry and exit points. These grommets provide a dust & debris barrier during and after installation. All NETSYS USA connector interface modules can be utilized in the four-rack space enclosure. Optional 12- and 24-fiber splice trays are available.

| PART NUMBER     | DESCRIPTION   |
|-----------------|---|
| NET- FBX4MRACK  | 4-Module (24 to 48 Fiber) Fiber Box Rack Mount, Black 2UR<br>Dimensions: 3.50"H x 19.0"W x 13.0"D   |
| NET- FBX6MRACK  | 6-Module (36 to 72 Fiber)Fiber Box Rack Mount, Black 2UR<br>Dimensions: 3.50"H x 19.0"W x 13.0"D    |
| NET- FBX12MRACK | 12-Module (72 to 144 Fiber) Fiber Box Rack Mount, Black 4UR<br>Dimensions: 7.00"H x 19.0"W x 13.0"D |

## Wire Management Brackets

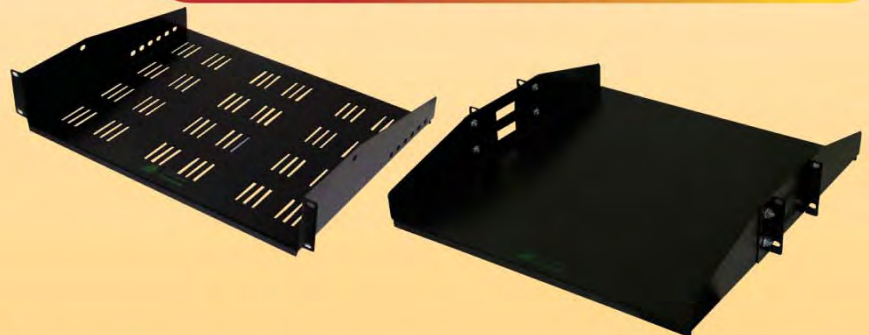
NETSYS USA enhanced horizontal wire managers protect cable and maintain its integrity on a standard 19" rack. The high quality injection molded wire managers possess a one-inch minimum radius, which guards against extensive bending of the cables and increases transmission reliability. Snap-on, injection molded covers hinge down for easy access to patch cords in front of rack during moves, adds, and changes (MAC's). Also available vertical Managment 1, 2 size 35" lengths and 83".



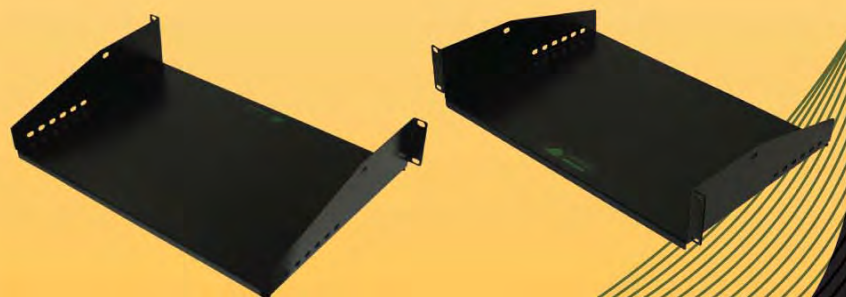
The vertical wire manager is available in single and dual-sided styles. It can be mounted on the side of the relay rack as well as between two adjacent racks. Equipped with feed-through holes to move cable from back to front and vice versa, the black vertical wire management bracket is offered in 35" lengths and 83" lengths.

## Wall Mount Brackets and Shelves

NETSYS USA shelves offers two styles of solid and vented equipment shelves for mounting telecommunications devices in a 19" rack or cabinet. The cantilevered shelf mounts to the front or rear of the rack's mounting rails. Both the center weight and the cantilevered shelf are manufactured from 16 gauge steel and they come with 10-32 and 12-24 mounting hardware. The cantilevered shelf is rated for 50 pound capacity and the center weight is rated for 75 pound capacity.



| PART NUMBER | DESCRIPTION   |
|-------------|---|
| 77011919    | NETSYS Center Mount Solid Shelf Color Black                             |
| 77011914V   | NETSYS 19"X 14"D Flush Cant.Vented Shelf 19"RackMntg (Hole Spacing-EIA) |
| 77011900    | NETSYS Sliding Keyboard, Mouse Shelf Color Black                        |
| 77011912S   | NETSYS 12"D Flush Cant.SolidShelf 19"RackMntg (Hole Spacing-EIA)        |
| 77011914S   | NETSYS 19" X 14"D Flush Cant. SolidShelf Color Black (Hole Spacing-EIA) |



## Routing Raceway Solutions

NETSYS USA raceway system is a one piece latching duct designed to contain, route and protect wire and cable when it is not feasible to run it within the wall. It is manufactured from a 94 V-0 PVC and features a superior adhesive which conforms to most any surface. Designed with a flexible hinge, the raceway allows numerous openings without creating discoloration or stress cracking. The self-locking, hidden positive latch allows for quick re-entry as well as secure installation of wire and cable.



## Wall Mount Cabinet Solutions

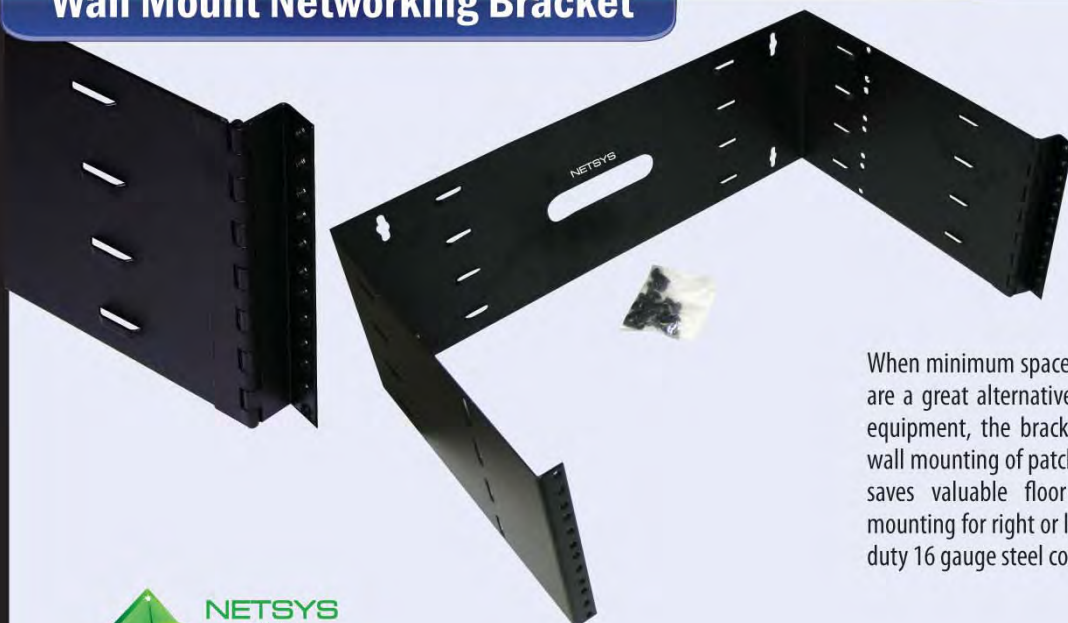


NETSYS USA Offer you a Networking Enclosure 12UR Wall Mount, with their great aesthetic, rugged construction, Specially designed for retail, office, telecom closets or any Hosting applications where space is critical. Available in 12UR and 27UR.

### Features

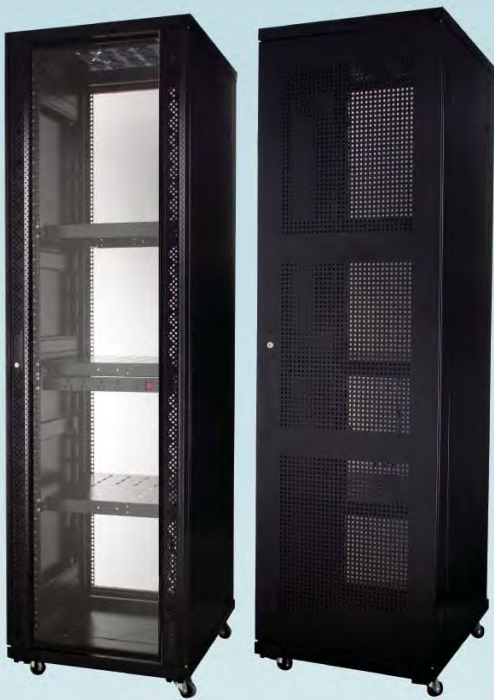
- Welded Steel Construction
- Mounting 19"
- Removable Side panels
- Glass Door w/locks
- 6 Outlets Power Strip
- 2 Cooling Fan 80Cfm Included
- Top And Bottom Fan Knockouts each accommodate 4" Fans

## Wall Mount Networking Bracket



When minimum space is required, these wall mount bracket are a great alternative to a full-size rack. Designed for 19" equipment, the brackets hinged design allows convenient wall mounting of patch panels and small equipment while it saves valuable floor space. Brackets provide universal mounting for right or left hinging. Manufactured from heavy duty 16 gauge steel construction.

## Servers Cabinets



Netsys USA Offer you a Networking Enclosure 47RU Stand-Alone Specially designed for servers farms and Data Center applications, The greater depth is perfect to accommodate standard servers and blade server hosting, painted with power coated (color black)(ASTM-STANDARD-THERMO PLASTIC POLYESTER ELECTROSTACTICALLY APPLIED)



## Networking Tools and Testers

Tools for Fiber Optic UTP and Coaxial cables.



Profesional Installer Tool Kit



**NETSYS**  
USA Inc.  
Network Systems Solutions

[www.netsys-usa.com](http://www.netsys-usa.com)

2712 N.W. 112 AVENUE DORAL, FLORIDA 33172 PH: 305-406-0338/9

